



---

## Main datas

Builder : ST Boats  
Year : 2007  
Length : 10,74  
Draft minimum : 0,70  
Hull : Monohull  
Area : France Channel  
Berth details :  
Flag : France

Subtype :  
Architect : Garroni / Musio  
Material : GRP  
Beam : 3,68  
keel : Fixed Keel  
Life Raft : No  
Mooring : Yes  
Leasing in progress : No

---

## Engines

Model : 6BY  
Montage : In Board (IB)  
Power Unit. (CV) : 260  
Hours : 830  
Fuel capacity : 800

Brand : YANMAR  
Fuel : Diesel  
Engine(s) : 2  
Owner's Comments :  
Drive : Shaft drive

## Facilities

Sailor Cabin : 0

WC : Sailor

Helm : Yes

Double Cabin : 2

Head : 1

Berth : 6

Flybridge : Yes

---

## Electronics

Radar details :

Pilot details :

Sounder details :

GPS details :

Plotter details :

Converter 12/220 : No

Watermaker details :

Radar : Yes

Autopilot : Yes

Sounder : Yes

GPS : Yes

Chartplotter : Yes

VHF : Yes

Watermaker : No

---

## Bridge equipment

Hydrolic Gangway : No

Bath platform : Yes

Winter cover : No

Sprayhood : No

Teak cockpit : Yes

Sails details :

Gangway : No

Davits : No

Electric windlass : Yes

Cockpit awning : Yes

Furling genoa : No

Spinnaker : No

---

## Major equipment

Stern thruster : No

Group and thruster details :

Charger and AC details :

Black Water : Yes

Tender : Yes

Details :

Bow Thruster : Yes

Marine Gen. : No

AC : No

Hot water : Yes

Flaps : Yes

Tender Engine : Yes

# Appliances

Freezer : No

Microwaves : Yes

Electric stove : No

Heating details :

Dishwasher : No

TV : Yes

IceMaker : No

Oven : No

Gas stove : Yes

Heater : No

Washing machine : No

TV antenna : No

SAT-TV : No

---

## Owner's Comments

### ST BOATS 34 CRUISER FLY

#### General Description

I am offering for sale my **ST BOATS 34 CRUISER FLY**, a used boat from **2007** that was first commissioned in **2008**. This boat is ideal for sailing enthusiasts with an **overall length of 10.74 meters** and a **beam of 3.68 meters**.

#### Technical Specifications

- **Minimum draft:** 0.70 m
- **Maximum air draft:** 3.60 m
- **Air draft for transport:** 4.10 m
- **Headroom:** 1.87 m
- **Loaded displacement:** approximately 7500 KG
- **CE design category:** B - MAX 10 PERSONS

#### Layout

This boat is equipped with **2 cabins** and a **bathroom with shower cabin**. It also has a **WC with black water and macerator**.

The **bright saloon** is in good condition with **white/cream cushions** protected by covers since 2008. It is convertible into a sleeping area for 2 people, offering a total of **6 berths**.

The kitchen is equipped with a **stainless steel sink with mixer tap**, a **2-burner gas stove**, a **microwave**, and a **fridge**.

#### Electronics and Navigation

The boat is equipped with an **interior helm station with control panel** and a **flybridge control**. It is fitted with a **GARMIN radar** installed in 2019, an **autopilot RAYMARINE** compatible with the plotter, and a **GPS, plotter, radar**:

**GARMIN GPSMAP 1222 Touch** touchscreen installed in 2019.

It also has a **fixed VHF RADIO OCEAN RO4700** and a **portable VHF**.

## Electricity and Energy

The boat is equipped with a **shore power connection**, a **battery charger**, **3 batteries** including 2 X 180 AH, a **differential circuit breaker**, and an **electrical panel** with 220 V and 12V sockets.

## Engines

The engines are **YANMAR 2 x 260 HP**, model **6BY 260** with shaft drive. They have **830 hours of use**.

The boat is equipped with a **bow thruster SIDE POWER** installed in 2017 and **2 electric flaps Lenco**. The diesel fuel capacity is **800 liters** (2 x 400 l) with an approximate cruising consumption of **45 l/h** on both engines.

## Equipment

The boat has a **flybridge with control panel**, a **complete enclosed aft cockpit bimini** (new 2023), a **windshield cover**, an **electric windlass with anchor and chain**, and an **aft platform with bench, cushions, and storage lockers**.

It is also equipped with a **teak-latted swimming platform** with a swim ladder, an **electric bilge pump**, a **manual bilge pump**, an **outdoor shower**, and **fire extinguishers**.

## Why is this boat interesting to buy?

The **ST BOATS 34 CRUISER FLY** is a seriously maintained boat and ready to sail. It has been maintained by professionals and all maintenances are up to date. It is equipped with numerous modern equipment and is in excellent condition, making it an ideal choice for sailing enthusiasts.

---

Limitation of liability : XBOAT presents the details of the boat as supplied to us by the owner.

Owners may make errors or changes without notifying us. This information is not contractual and does not bind XBOAT in any way. It cannot be opposed by a visitor or a buyer.









































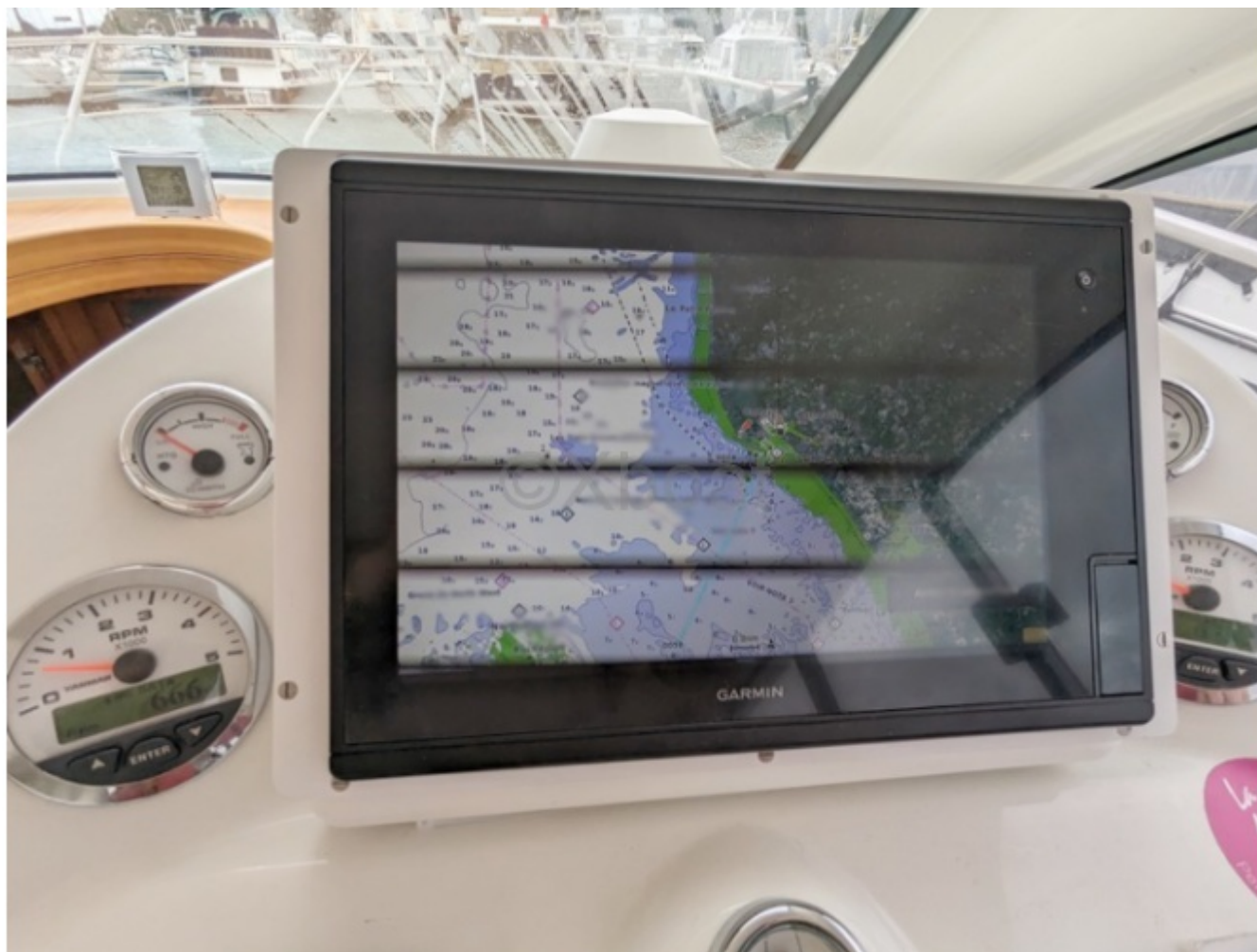






















































































©Xboat





# 34 CRUISER

## CARACTÉRISTIQUES

Longueur Hors Tout	10,74 m
Bau maxi	3,68 m
Tirant d'eau	0,80 m
*Déplacement	7,85 T
Catégorie	B
Motivisation Diesel (Transmission ligne d'arbre) 2 x 230 HP a 2 x 315 HP	
Capacité gasoil	2 x 400 L
Capacité d'eau	215 L
Hauteur sous barrot maxi	2,05 m – 1,96 m
Dimensions cockpit	3,20 m x 1,90 m
Passagers recommandés	8/10

\* Déplacement maxi, après, et sans services.

Le charter se réserve le droit de modifier les spécifications et les prix sans préavis. Certains des bateaux qui apparaissent sur ce catalogue sont équipés d'options.



©Xboat



ST BOATS crée le design et construit des bateaux à moteur entre 6 et 12 mètres sur deux lignes, croisière et pêche promenade. Le chantier situé à Vila Nova de Cerveira, à 30 minutes de l'aéroport international de Vigo (Espagne), dispose de 15 000 m<sup>2</sup> d'installations couvertes sur une surface totale de 40 000 m<sup>2</sup>. Avec une production annuelle de 400 unités, il emploie 300 personnes dont 80 sont du personnel technique qualifié.

  
**ST BOATS**

