



Main datas

Builder : Amel
Year : 1984
Length : 15,80
Draft minimum : 1,90
Hull : Monohull

Subtype :
Architect :
Material : GRP
Beam : 4,30
keel : Fixed Keel

Engines

Model :
Montage : In Board (IB)
Power Unit. (CV) : 75
Hours : 400
Fuel capacity : 500

Brand : perkins
Fuel : Diesel
Engine(s) : 1
Drive : Shaft drive

Facilities

Sailor Cabin : 0

WC : Sailor

Helm : Yes

Double Cabin : 2

Head : 2

Berth : 7

Flybridge : No

Technical Details

AMEL MANGO is a cruising sailboat designed by the French builder Amel, renowned for the quality and robustness of its boats. The Amel Mango is particularly appreciated for its ability to navigate safely and comfortably, even in difficult conditions.

Main Characteristics

- Length Overall (LOA): Approximately 12.98 meters -
- Waterline Length (LWL): 10.50 meters -
- Beam: 3.96 meters -
- Draft: 2.10 meters -
- Displacement: Approximately 12.5 tonnes -
- Sail Area (Close-Hauled): Approximately 83 m² -
- Sail Area (Reaching): Approximately 160 m² -

Construction

- Hull Material: Fiberglass-reinforced polyester -
- Structure: Lead bulb -
- Deck: Teak or composite -

Performance and Maneuverability

- Cruising Speed: Approximately 6-7 knots -
- Maximum Speed: Can reach 10-12 knots depending on conditions -
- Water Capacity: Approximately 600 liters -
- Fuel Capacity: Approximately 300 liters -

Comfort and Equipment

- Cabin: 3 double cabins -
- Bathroom: 2 bathrooms -
- Kitchen: Well-equipped with refrigerator, freezer, and double sink -
- Electronics: GPS, depth sounder, anemometer, autopilot -

Safety

- Safety: Designed for offshore sailing with robust safety systems -
- Autonomy: Capability to stay at sea for long periods thanks to its water and fuel reserves -

The Amel Mango is an ideal choice for sailors looking for a reliable and comfortable sailboat for long voyages. Its solid construction and quality equipment make it a top-tier cruising boat.

Limitation of liability : XBOAT assumes no responsibility for the information provided in this technical data sheet, which has been sourced from the internet and has not been verified. This information is non-contractual and does not, in any way, bind XBOAT.



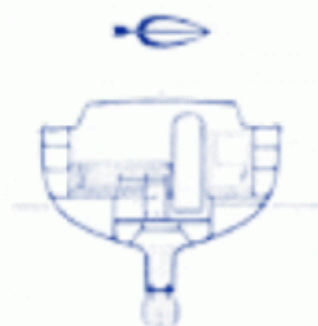
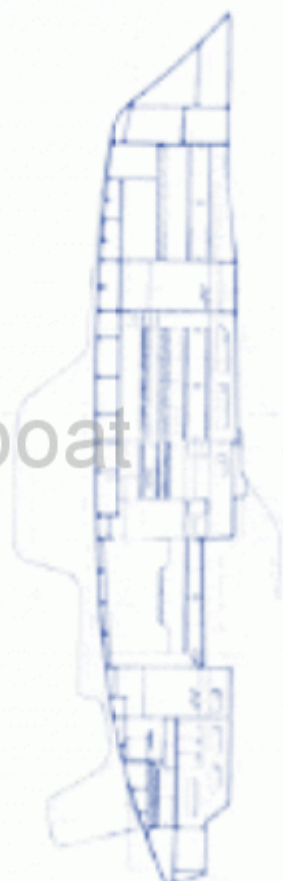
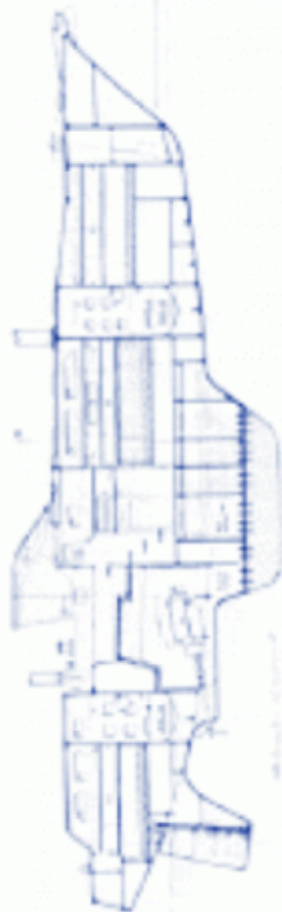
MANGO

Exclusivité de MBO et de CUBERO



MANGO

18' 000 LITRES CAPACITE



©Xboat