



---

## Main datas

Builder : Meta  
Year : 2003  
Length : 19,80  
Draft minimum : 1,50  
Hull : Monohull

Subtype :  
Architect : Joubert/nivelt  
Material : Aluminum  
Beam : 5,50  
keel : Centerboard integral

---

## Engines

Model : D5TA  
Montage : In Board (IB)  
Power Unit. (CV) : 165  
Hours : 5000  
Fuel capacity : 3500

Brand : VOLVO  
Fuel : Diesel  
Engine(s) : 1  
Drive : Shaft drive

# Facilities

Sailor Cabin : 0

WC : Electric

Helm : No

Double Cabin : 3

Head : 2

Berth : 12

Flybridge : No

---

## Technical Details

The Meta Joubert DI is a cruising sailboat designed by the famous naval architect Marc Lombard for the Meta shipyard. This boat is renowned for its modern design, performance, and comfort while sailing. Here are some of its main characteristics:

- Naval Architect: Marc Lombard -
- Shipyard: Meta -
- Length Overall (LOA): Approximately 11.98 meters -
- Waterline Length: Approximately 10.50 meters -
- Beam: Approximately 3.85 meters -
- Draft: Approximately 2.30 meters -
- Displacement: Approximately 8,500 kg -
- Main Sail Area: Approximately 45 m<sup>2</sup> -
- Genoa Area: Approximately 35 m<sup>2</sup> -
- Spinnaker Area: Approximately 120 m<sup>2</sup> -
- Water Tank Capacity: Approximately 400 liters -
- Fuel Tank Capacity: Approximately 200 liters -
- Engine: Yanmar 3YM30 (29 HP) or equivalent -
- Cabins: 2 double cabins -
- Berths: 2 -
- Bathroom: 1 -
- Construction Material: Laminated polyester -
- Keel Type: Long keel -

The Meta Joubert DI is ideal for cruising enthusiasts seeking a balance between performance and comfort. Its elegant design and modern equipment make it a popular choice among experienced sailors and families.

---

Limitation of liability : XBOAT assumes no responsibility for the information provided in this technical data sheet, which has been sourced from the internet and has not been verified. This information is non-contractual and does not, in any way, bind XBOAT.



























































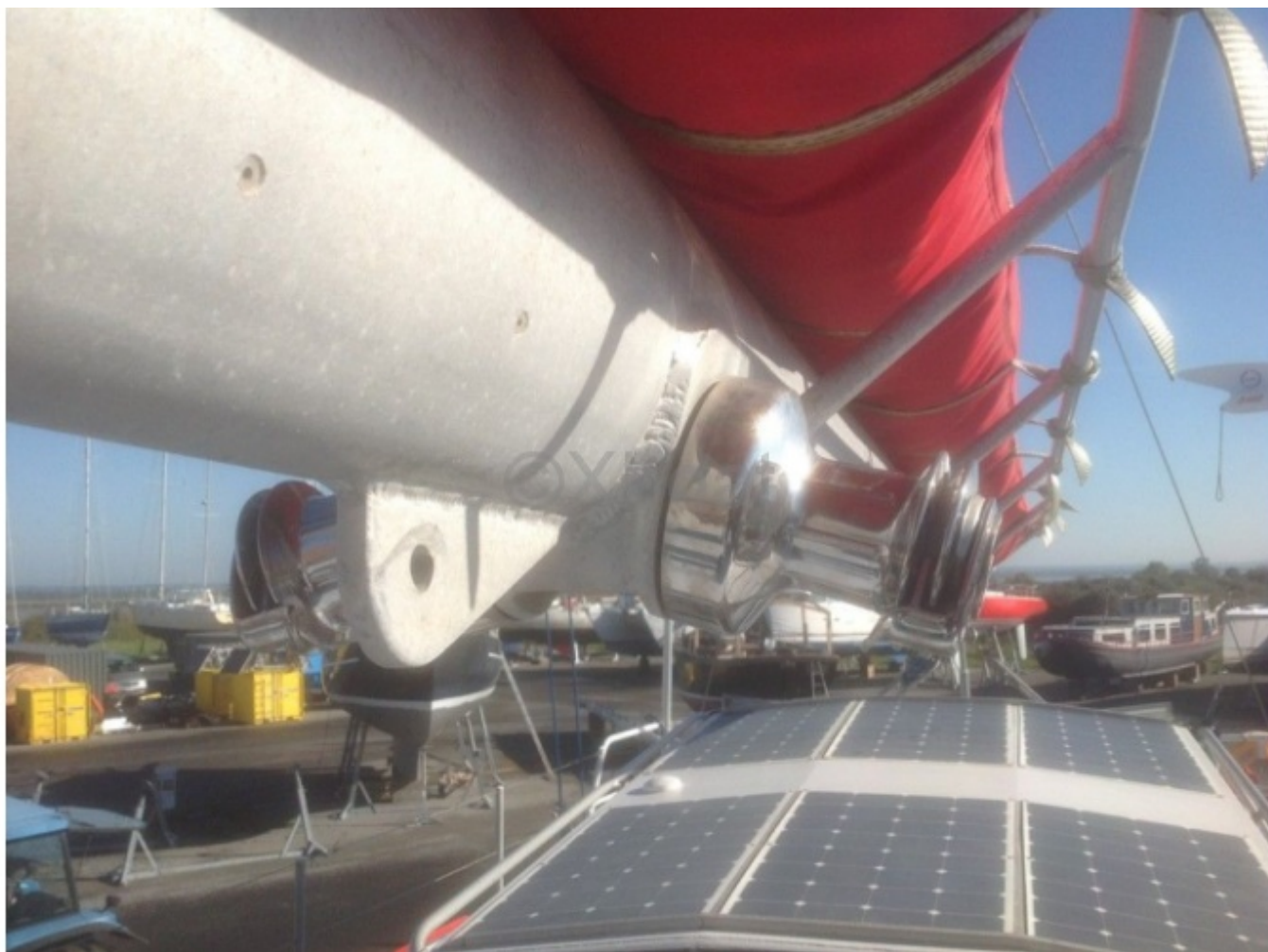


















## Aménagements

